



# WOLF E-NEWS

*from Westside High School*

14201 Briar Forest Houston, Texas 77077 \* Phone: 281.920.8000 \* Fax: 281.920.8059

April 1, 2019

## National Academic Award Scholars

Last week, Westside celebrated our National Academic Award Scholars with a breakfast in the Learning Commons. Award recipients were honored based on their outstanding achievement on the PSAT/NMSQT (National Merit Scholarship Qualifying Test). Students invited parents and mentors and acknowledged them for their support. **(More pics on Page 2)**



## Calendar

**April 1**

**Canceled :** PTO Meeting, TONIGHT, 7:00 PM in the Library

**April 2**

Band UIL Preview Concert, 6 PM, Auditorium

**April 8-12**

Prom Ticket Sales

**April 9**

English I STAAR Test

**April 11**

English II STAAR Test



Continued from Page 1



WESTSIDE IS SADDENED  
BY THE SUDDEN LOSS OF  
OUR WOLF,

*Fason  
Atkins*

WE EXTEND OUR  
DEEPEST SYMPATHIES TO HIS  
FAMILY AND FRIENDS



## STAAR English Tests Next Week

End of Course (EOC) exams will be administered for English I and English II next week.

**Tuesday, April 9**  
**English I STAAR**

**Thursday, April 11**  
**English II STAAR**

Testers should plan ahead to get a good night of sleep, eat breakfast, and arrive on-time at 8:20 AM for the first bell .

Non-testers have a late start on those two days. Lunch will be offered at 1:00 PM and classes begin at 1:40 PM.

Please mark your calendars accordingly.

### STAAR Testing Bell Schedule 2019

**4/8 – 4/12**

**Monday 4/8**

Periods 1-7

**(English I EOC) Tuesday 4/9**

8:20 AM First Bell for Testers

1:00 – 1:35 Lunch non-testers

1:40 – 2:10 Lunch testers

1:40 – 2:50 1<sup>st</sup>

2:55 – 4:00 2<sup>nd</sup>

**Wednesday 4/10**

Odd Block with Guidance

**(English II EOC) Thursday 4/11**

8:20 AM First Bell for Testers

1:00 – 1:35 Lunch non-testers

1:40 – 2:10 Lunch testers

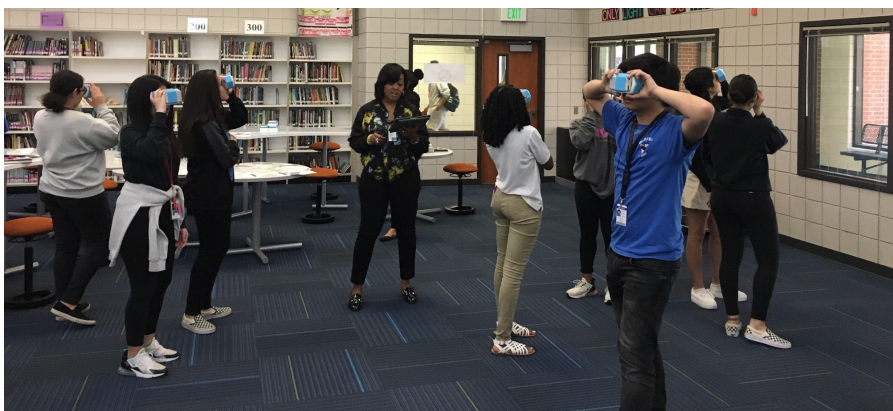
1:40 – 2:50 4<sup>th</sup>

2:55 – 4:00 6<sup>th</sup>

**Friday 4/12**

Periods 1-7

## New Methods for Exploring the Past



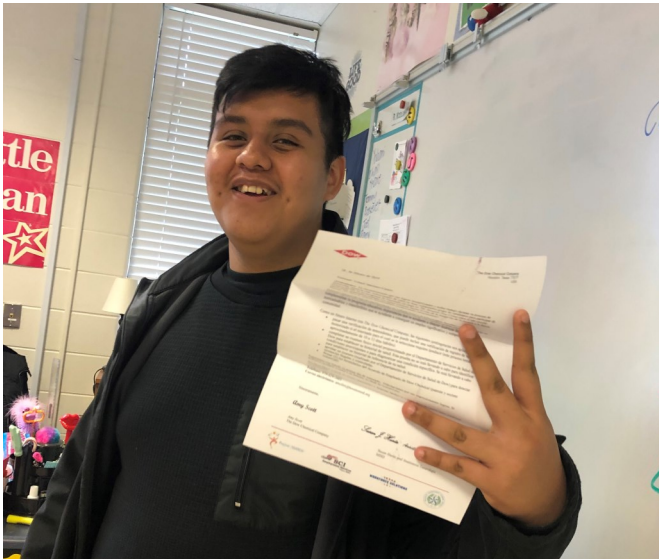
AP US History and Dual Credit US History students took a virtual 3-D tour of the Civil Rights Movement in the LC with Ms. Sherri Powell from the HISD Tech Department.



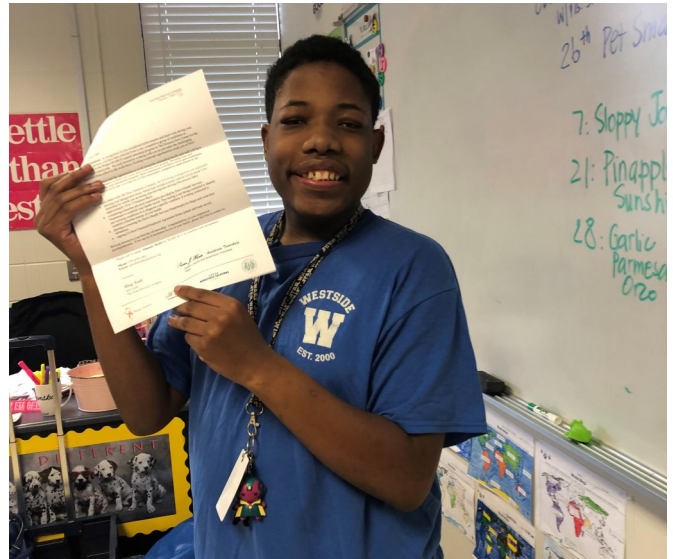
## Dow Chemical Interns

Two students from Ms. Kodlubanska's and Ms. Suleimanji's class have been selected to participate in Dow Chemical's 2019-2020 "Project SEARCH", an internship-style transition program offered to students with disabilities.

In this one-year training program, students prepare to transition from school to the work force. Congratulations to Yobani and Jaelyn, and good luck next year at Dow Chemical!



Yobani Martinez-Castro



Jaelyn Clark

## Westside Student Shares Stage with Idina Menzel



In other Special-Ed news, Ms. Stavinhoa's student, Abby Yadan, had the experience of a lifetime singing alongside Idina Menzel at a recent Theatre Under the Stars (TUTS) Gala. Ms. Menzel originated the role of Elphaba in Broadway's "Wicked", winning the Best Actress Tony Award in 2004. Way to go, Abby!

## T-Pro Update



Congratulations to the cast and crew of T-Pro's UIL One Act Play, *Twelve Dreams*.

### **UIL District Awards:**

Tech: Erick Rico-Toro

Honorable Mention All StarCast: Evie Ellis and

Erick Morales

All-Star Cast: Daniel Phillips

### **Bi-District Awards:**

Tech: Mia Vigil

Honorable Mention: Francine Castillo and Evie Ellis

All-Star Cast: Luke Stodghill

**Good run, Wolves!**





## Announcements

# AUDITIONS



April 22nd-25th 4:30-6:30PM

APRIL 22: INSTRUCTIONAL (BOYS AND GIRLS)

APRIL 23: REVIEW DAY (BOYS AND GIRLS)

APRIL 24: BOYS AUDITION

APRIL 25: GIRLS AUDITION



Questions?

Contact: [Amberly.Altamirano@houstonisd.org](mailto:Amberly.Altamirano@houstonisd.org)

Packets available in the Main Office

## Announcements

### Prom Info Meeting

Seniors planning on going to prom will be dismissed from **Guidance** to attend a meeting in the auditorium. You'll learn more about the following:

- Prom **contracts** and what's required to buy tickets
- **After-Prom** and prizes @ Dave & Buster's
- How to bring a **non-Westside guest**
- **Dress code** & other details

**SENIOR LADIES: Wednesday 4/3**

**SENIOR GENTLEMEN: Thursday 4/4**

*It's a Great Day  
to be a Wolf!*

## Announcements



### It's Your Summer – #GetPaid2019

#### It's time to gear up for your summer job:

- If you are between the ages of 16-24
- In school or out of school
- *Grab your Fast Pass* – attend a free job readiness workshop before the school year ends and be the first to reserve your summer job
- Summer jobs begin in early June 2019
- Earn \$10.00 hourly – work up to 30 hours a week for 5 to 12 weeks (*eligibility guidelines apply*)

#### Register:

- Send a text to: **40691**
  - In the body of the text type: **#GetPaid2019**
  - Complete the online registration link
- or
- Visit one of our offices and ask for a Summer Jobs 2019 representative:  
Find your closest office at [www.wrksolutions.com/find-a-location](http://www.wrksolutions.com/find-a-location)  
**(888) 469-5627**
- or
- If you are a student enrolled with Vocational Rehabilitation Services, contact your counselor and ask about **Summer Earn and Learn**.  
**(832) 681-2633**





## Announcements

2020

### Trip to Amsterdam, Brussels & Paris

**Parent Info Meeting**  
**April 18**  
**6:30 PM in S 126**

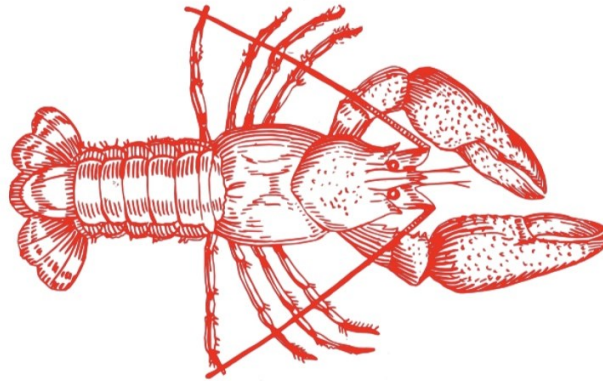
Click [here](#) to sign up to attend the meeting



## FINAL EXAMS SPRING 2019

| Monday  | Tuesday  | Wednesday   | Thursday  | Friday          |             |                 |                            |                 |             |                 |             |                 |            |  |                        |                 |                 |  |  |   |                 |            |                 |           |
|---|--|---|---|-----------------|-------------|-----------------|----------------------------|-----------------|-------------|-----------------|-------------|-----------------|------------|--|------------------------|-----------------|-----------------|--|--|---|-----------------|------------|-----------------|-----------|
| <div>20</div> <div>Regular<br/>Schedule<br/>1<sup>st</sup> - 7<sup>th</sup></div> | <div>21</div> <div>Regular<br/>Schedule<br/>1<sup>st</sup> - 7<sup>th</sup></div>  | <div>22</div> <div>Regular<br/>Schedule<br/>1<sup>st</sup> - 7<sup>th</sup></div> | <div>23</div> <div>Block<br/>Schedule</div> <div><table><tr><td>1<sup>st</sup></td><td>8:30 – 9:35</td></tr><tr><td>3<sup>rd</sup></td><td>9:40 -11:40</td></tr><tr><td>Lunch</td><td>11:45-12:35</td></tr><tr><td>5<sup>th</sup></td><td>12:40-2:40</td></tr><tr><td>7<sup>th</sup></td><td>2:45-4:00</td></tr></table><div>Senior exams<br/>3<sup>rd</sup> and 5<sup>th</sup> Periods</div></div> | 1 <sup>st</sup> | 8:30 – 9:35 | 3 <sup>rd</sup> | 9:40 -11:40                | Lunch           | 11:45-12:35 | 5 <sup>th</sup> | 12:40-2:40  | 7 <sup>th</sup> | 2:45-4:00  | <div>24</div> <div>Block<br/>Schedule</div> <div>(Classes are <u>not</u> in order!)</div> <div><table><tr><td>1<sup>st</sup> Period</td><td>8:30 – 9:35</td></tr><tr><td>4<sup>th</sup></td><td>9:40 -11:40</td></tr><tr><td>Lunch</td><td>11:45-12:35</td></tr><tr><td>6<sup>th</sup></td><td>12:40-2:40</td></tr><tr><td>2<sup>nd</sup></td><td>2:45-4:00</td></tr></table><div>Senior exams<br/>4<sup>th</sup> and 6<sup>th</sup> Periods</div></div> | 1 <sup>st</sup> Period | 8:30 – 9:35     | 4 <sup>th</sup> | 9:40 -11:40  | Lunch  | 11:45-12:35   | 6 <sup>th</sup> | 12:40-2:40 | 2 <sup>nd</sup> | 2:45-4:00 |
| 1 <sup>st</sup>   | 8:30 – 9:35  |   |   |                 |             |                 |                            |                 |             |                 |             |                 |            |  |                        |                 |                 |  |  |   |                 |            |                 |           |
| 3 <sup>rd</sup>   | 9:40 -11:40  |   |   |                 |             |                 |                            |                 |             |                 |             |                 |            |  |                        |                 |                 |  |  |   |                 |            |                 |           |
| Lunch   | 11:45-12:35  |   |   |                 |             |                 |                            |                 |             |                 |             |                 |            |  |                        |                 |                 |  |  |   |                 |            |                 |           |
| 5 <sup>th</sup>   | 12:40-2:40   |   |   |                 |             |                 |                            |                 |             |                 |             |                 |            |  |                        |                 |                 |  |  |   |                 |            |                 |           |
| 7 <sup>th</sup>   | 2:45-4:00  |   |   |                 |             |                 |                            |                 |             |                 |             |                 |            |  |                        |                 |                 |  |  |   |                 |            |                 |           |
| 1 <sup>st</sup> Period  | 8:30 – 9:35  |   |   |                 |             |                 |                            |                 |             |                 |             |                 |            |  |                        |                 |                 |  |  |   |                 |            |                 |           |
| 4 <sup>th</sup>   | 9:40 -11:40  |   |   |                 |             |                 |                            |                 |             |                 |             |                 |            |  |                        |                 |                 |  |  |   |                 |            |                 |           |
| Lunch   | 11:45-12:35  |   |   |                 |             |                 |                            |                 |             |                 |             |                 |            |  |                        |                 |                 |  |  |   |                 |            |                 |           |
| 6 <sup>th</sup>   | 12:40-2:40   |   |   |                 |             |                 |                            |                 |             |                 |             |                 |            |  |                        |                 |                 |  |  |   |                 |            |                 |           |
| 2 <sup>nd</sup>   | 2:45-4:00  |   |   |                 |             |                 |                            |                 |             |                 |             |                 |            |  |                        |                 |                 |  |  |   |                 |            |                 |           |
| <div>27</div> <div>Memorial Day</div>   | <div>28</div> <div>7<sup>th</sup> Period<br/>Exam</div> <div>Modified Exam Schedule</div> <div><table><tr><td>1<sup>st</sup></td><td>8:30-9:15</td></tr><tr><td>2<sup>nd</sup></td><td>9:20-10:00</td></tr><tr><td>3<sup>rd</sup></td><td>10:05-10:45<br/>(ADA 10:15)</td></tr><tr><td>4<sup>th</sup></td><td>10:50-11:30</td></tr><tr><td>Lunch</td><td>11:35-12:25</td></tr><tr><td>5<sup>th</sup></td><td>12:30-1:10</td></tr><tr><td>6<sup>th</sup></td><td>1:15-1:55</td></tr><tr><td>7<sup>th</sup></td><td>2:00-4:00</td></tr></table><div>ALL grade levels 7<sup>th</sup> exam</div></div> | 1 <sup>st</sup>   | 8:30-9:15   | 2 <sup>nd</sup> | 9:20-10:00  | 3 <sup>rd</sup> | 10:05-10:45<br>(ADA 10:15) | 4 <sup>th</sup> | 10:50-11:30 | Lunch           | 11:35-12:25 | 5 <sup>th</sup> | 12:30-1:10 | 6 <sup>th</sup>  | 1:15-1:55              | 7 <sup>th</sup> | 2:00-4:00       | <div>29</div> <div>1st and 2nd<br/>Period<br/>EXAMS</div> <div><div>1<sup>st</sup> Period Exam<br/>(8:30-10:30)</div><div>2<sup>nd</sup> Period Exam<br/>(10:40-12:40)</div><div>ALL grade levels</div><div>Lunch &amp; Buses 1:00</div><div>*Senior check out<br/>1:00-3:00</div></div> | <div>30</div> <div>3<sup>rd</sup> &amp; 4<sup>th</sup><br/>Period<br/>EXAMS</div> <div><div>3<sup>rd</sup> Period Exam<br/>(8:30-10:30)</div><div>4<sup>th</sup> Period Exam<br/>(10:40-12:40)</div><div>9<sup>th</sup>, 10<sup>th</sup>, 11<sup>th</sup> grade</div><div>Lunch &amp; Buses 1:00</div></div> | <div>31</div> <div>5<sup>th</sup> &amp; 6<sup>th</sup><br/>Period<br/>Exams</div> <div><div>5<sup>th</sup> Period Exam<br/>(8:30-10:30)</div><div>6<sup>th</sup> Period Exam<br/>(10:40-12:40)</div><div>9<sup>th</sup>, 10<sup>th</sup>, 11<sup>th</sup> grade</div><div>Lunch &amp; Buses 1:00</div><div>Grad Rehearsal<br/>Last day of Instruction</div></div> |                 |            |                 |           |
| 1 <sup>st</sup>   | 8:30-9:15  |   |   |                 |             |                 |                            |                 |             |                 |             |                 |            |  |                        |                 |                 |  |  |   |                 |            |                 |           |
| 2 <sup>nd</sup>   | 9:20-10:00   |   |   |                 |             |                 |                            |                 |             |                 |             |                 |            |  |                        |                 |                 |  |  |   |                 |            |                 |           |
| 3 <sup>rd</sup>   | 10:05-10:45<br>(ADA 10:15)   |   |   |                 |             |                 |                            |                 |             |                 |             |                 |            |  |                        |                 |                 |  |  |   |                 |            |                 |           |
| 4 <sup>th</sup>   | 10:50-11:30  |   |   |                 |             |                 |                            |                 |             |                 |             |                 |            |  |                        |                 |                 |  |  |   |                 |            |                 |           |
| Lunch   | 11:35-12:25  |   |   |                 |             |                 |                            |                 |             |                 |             |                 |            |  |                        |                 |                 |  |  |   |                 |            |                 |           |
| 5 <sup>th</sup>   | 12:30-1:10   |   |   |                 |             |                 |                            |                 |             |                 |             |                 |            |  |                        |                 |                 |  |  |   |                 |            |                 |           |
| 6 <sup>th</sup>   | 1:15-1:55  |   |   |                 |             |                 |                            |                 |             |                 |             |                 |            |  |                        |                 |                 |  |  |   |                 |            |                 |           |
| 7 <sup>th</sup>   | 2:00-4:00  |   |   |                 |             |                 |                            |                 |             |                 |             |                 |            |  |                        |                 |                 |  |  |   |                 |            |                 |           |

## Announcements



PLEASE JOIN US FOR THE 4<sup>th</sup> ANNUAL



Send a Kid to Camp Community Crawfish Boil

Proceeds will be used for Camp Scholarships

**SUNDAY, APRIL 7<sup>th</sup>, 2019**

**5:00-7:00PM**

**NOTTINGHAM FOREST CLUB**

**325 KICKERILLO DR, HOUSTON, TX 77079**

VISIT: **WESTSIDEYL.YOUNGLIFE.ORG** FOR TICKETS

**\$25 FOR STUDENTS**

**\$50 FOR ADULTS**

**Ticket includes Crawfish, Shirt and Drinks!**

**A crawfish boil for the whole family!**

**All ages welcome**

**All Proceeds benefit**

**Stratford-Westside Young Life**

Young Life is a 501(c)(3) organization and all contributions are  
tax deductible as allowed by law.



## Announcements

# Cheerleading *Tryouts!*

**Turn in cheer packet to  
E124 by THURSDAY APRIL 4  
!!!!**

**Friday April 12,  
and Monday  
through  
Thursday - 15,  
16, 17, 18 in the  
performance  
and practice  
GYM  
4:30pm-  
6:00 pm**



**NEW Club  
Maker's Space  
Take a walk on the creative side!**



"If you enjoy customized and unique personalized items,  
we have a space for you!"



**Join us in Maker's Space.....E122  
Wednesdays During Lunch  
Thursdays After School**

Ms. Hebert & Ms. Dummar



## Announcements

Westside High School presents

# UIL CONCERT PREVIEW

**Tuesday, 4/2 6:00**

**+GRAINGER  
+SOUSA  
+GILLINGHAM**

**Westside Auditorium**

**WIND ENSEMBLE**



The Tree Planting  
Field Trip  
to  
George Bush Park  
is rescheduled  
for Saturday  
April 6

See Ms. Garrett or Mr. Shull

| SPRING SEMESTER SATURDAY TUTORIAL SCHEDULE |                     |  |
|--|---------------------|--|
| Jan./Feb.                                  | 1/26<br>2/2<br>2/16 | Courses Offered:<br>Algebra I/II<br>Geometry<br>Pre-Cal<br>College Algebra<br>English I-IV<br>AP Lang<br>AP Lit<br>Biology<br>Chemistry<br>Physics<br>Environmental Science<br>World Geography<br>World History<br>U.S. History<br>APUSH<br>Government |
| Mar.                                       | 3/2<br>3/23<br>3/30 |  |
| Apr.                                       | 4/6<br>4/27         |  |
| May  | 5/4<br>5/11<br>5/18 |  |
|  |                     |  |



**Time Machine Teacher**

**SUBSCRIBE TODAY**  
AP TUTORIALS AND EVERYTHING LC RELATED

YOUTUBE CHANNEL  
TIME MACHINE TEACHER  
HOSTED BY: MS. ZIEGLER





## Announcements



Saturday Tutorials  
This Week!  
April 6  
9AM-12 Noon

### Senior Countdown

#### Prom

#### **"Galaxy Gala"**

May 4

8 PM-12:30 AM

Omni Houston Hotel Westside

After-Prom 1-5:30 AM

Dave & Buster's Katy Frwy

#### Ticket Sales

April 8-12—\$75

April 15-18 (late sales)—\$100

Commons ~ During Lunch

#### **Senior Honors Night**

(By Invitation)

May 16

6:30-8:30 PM Auditorium

#### **Senior Week**

May 29 Senior Check Out, 1-3 PM @LC

May 30 Panoramic Picture, 8:30 AM @ Gym

May 30 Grad March, 10:30 AM @ Elem. Schools

May 31 Grad Rehearsal, 8:30 AM @ Commons

May 31 Senior Picnic, 11 AM-1 PM, Back Fields

#### **Graduation Ceremony**

June 8

3 PM at NRG Stadium

## SCHOOL STORE HOURS



8 AM-First Bell  
AND  
During Lunch

Click [here](#) for uniform policy and product list  
Only Cash & Money Order Accepted  
No Returns No Exchanges



Do you plan to  
VOLUNTEER this year?

Athletics, Band,  
PTO, T-Pro, Field Trips

**You must be cleared  
through HISD**

Click [here](#) to get cleared!

### School Office Hours

8:00 AM- 4:30 PM

# SchoolPay®

[schoolpay.com](http://schoolpay.com)

- Art Fee
- Band Fee
- Baseball Fee
- Basketball (Girl's) Fee
- Choir Fee
- Cross Country Fee
- Football Fee
- HOSA Fee
- Inertia Fee
- Orchestra Fee
- Power Up
- Senior Dues
- Tennis Fee
- Theater Fee

## Quick Links

Subscribe to receive eNews by email:

<https://mailman.listserve.com/listmanager/listinfo/whscommunity>

Submit stories and photos for eNews:

[barbara.nassab@houstonisd.org](mailto:barbara.nassab@houstonisd.org)

School Web Address:

<https://www.houstonisd.org/westsidehs>

School Pay:

<https://www.schoolpay.com/>

HISD Web Address:

<https://www.houstonisd.org>